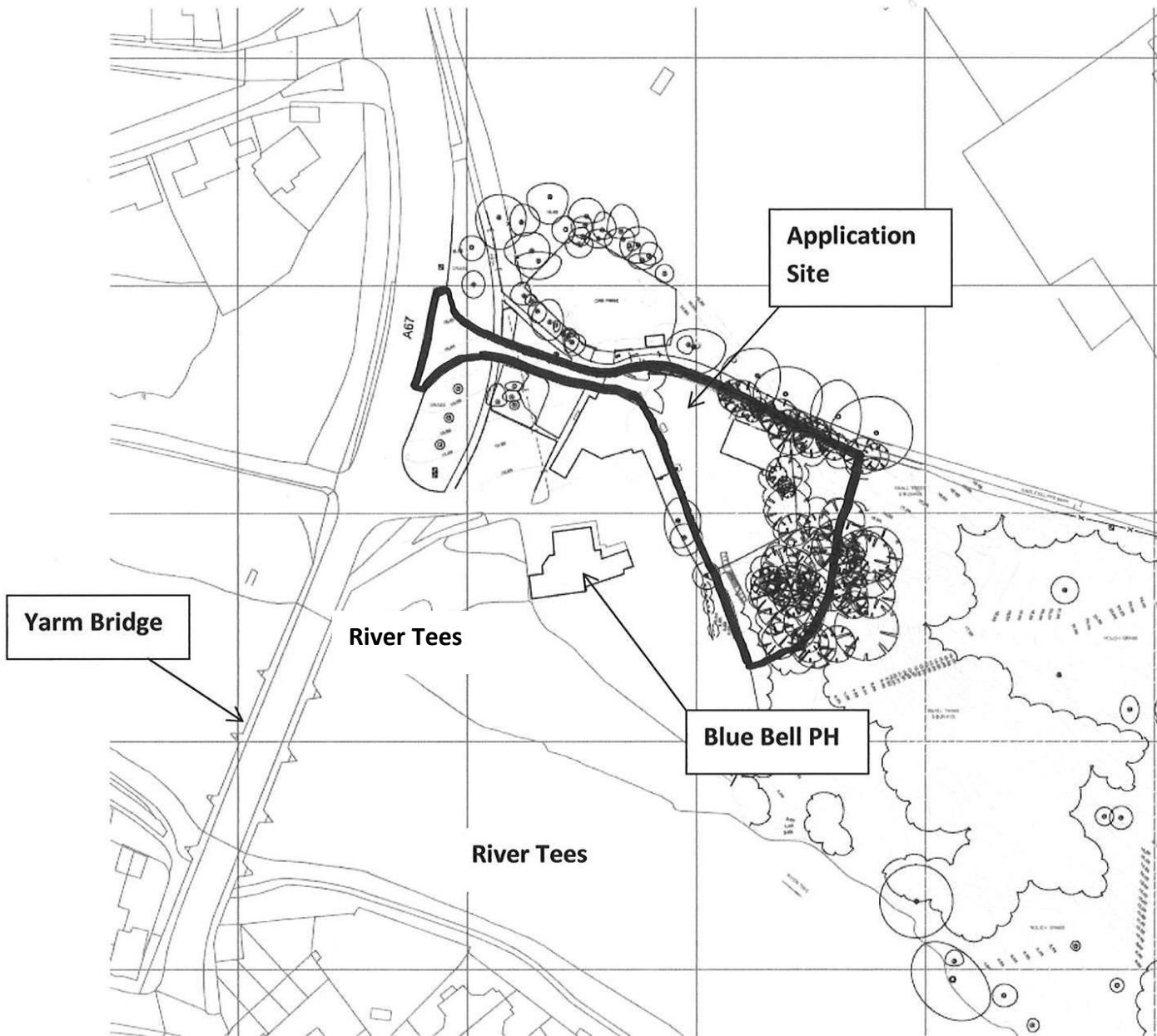


14/2496/REV – Land east of 661 Yarm Road, Eaglescliffe

Appendix 1: Site Location Plan



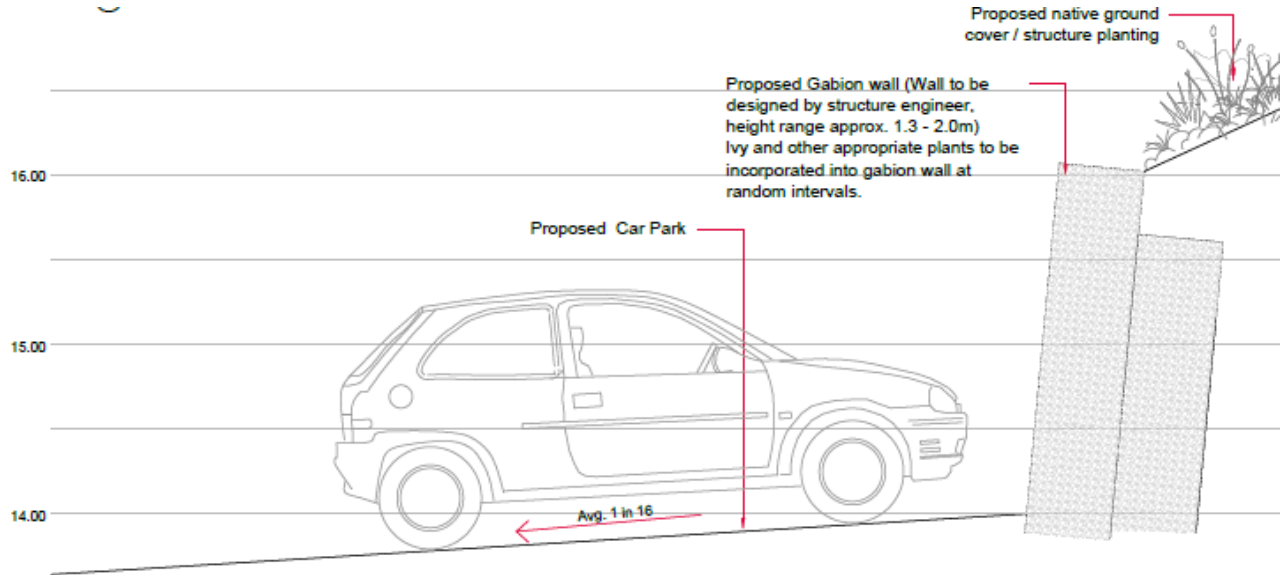
14/2496/REV – Land east of 661 Yarm Road, Eaglescliffe

Appendix 2: Site Layout Plan

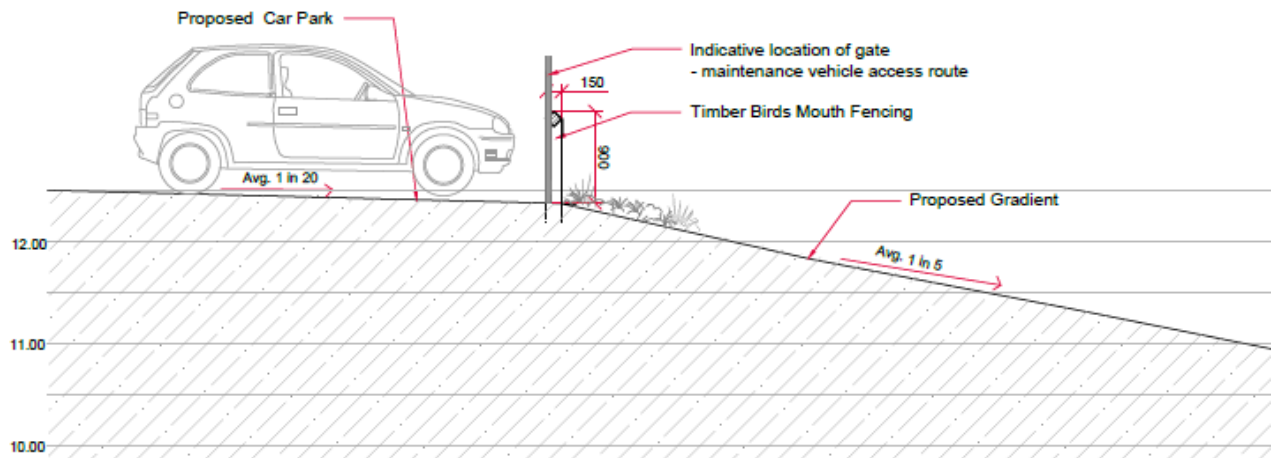


14/2496/REV – Land east of 661 Yarm Road, Eaglescliffe

Appendix 3: Section Detail (retaining features and boundary detail)

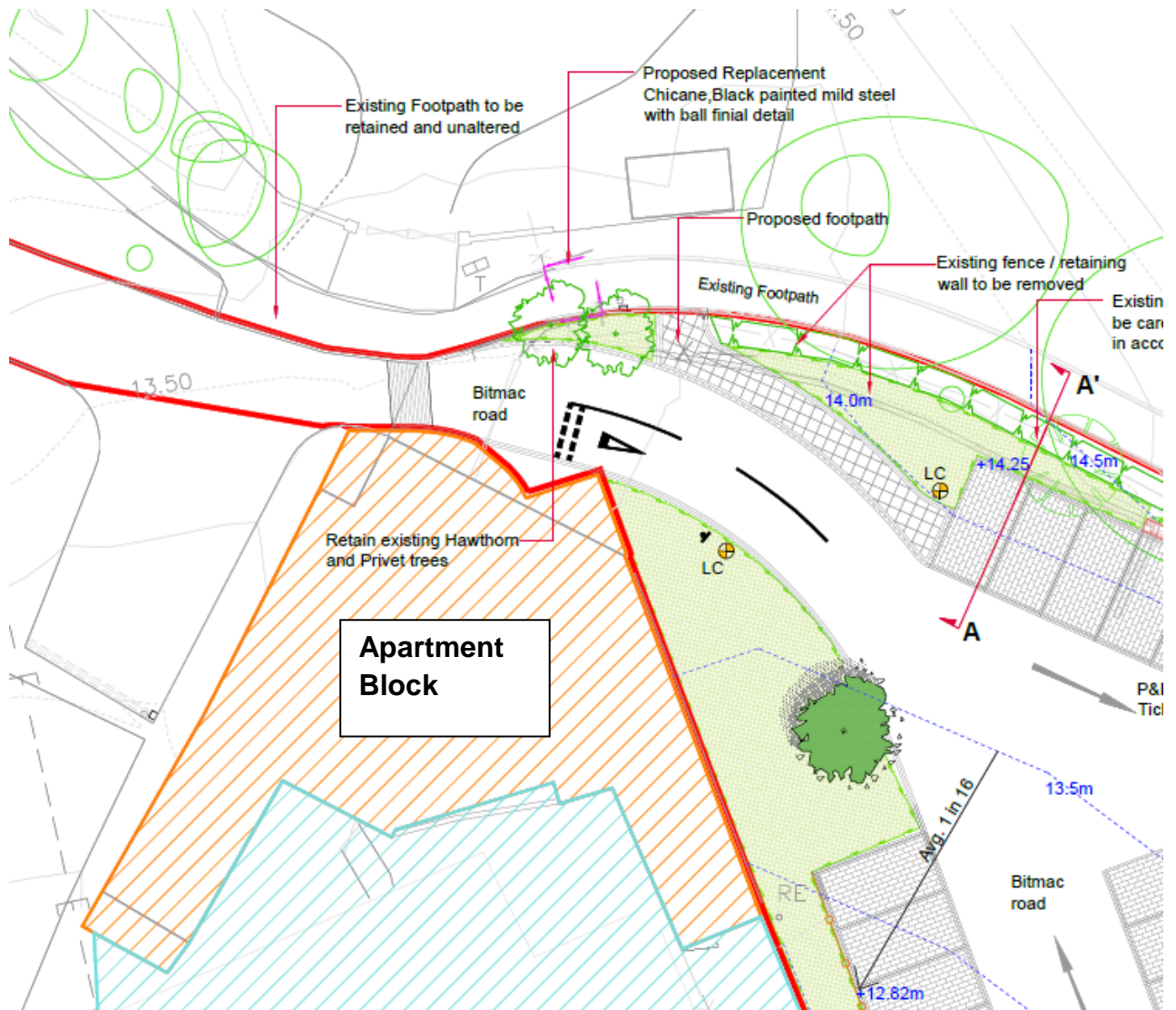


Section BB' 1:30 @ A1



14/2496/REV – Land east of 661 Yarm Road, Eaglescliffe

Appendix 4: Access detail



14/2496/REV – Land east of 661 Yarm Road, Eaglescliffe

Appendix 5: Northern Site Boundary detail

